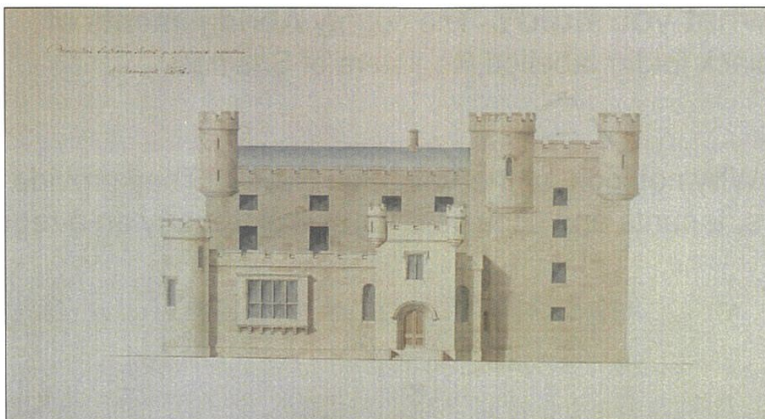
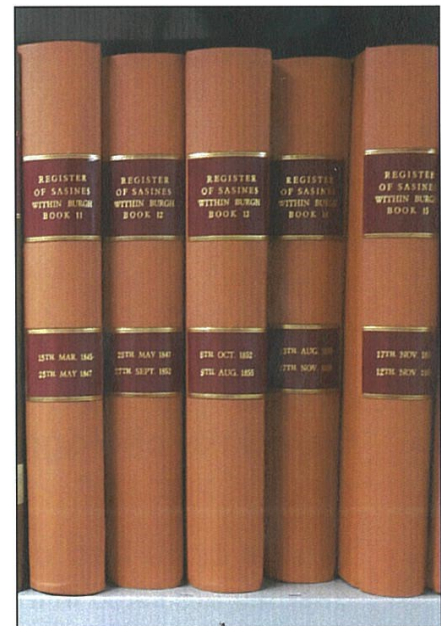


- ♦ **What are they?** **Sasines** (pronounced say-zin) are legal documents which record the transfer of land or building ownership from one person to another. We hold **Abridgements of Sasines** and certain **Sasine Minute Books** for Caithness and Wick Burgh
- ♦ **What dates do they cover?** **Abridgements of Sasines** date from 1781-1970 for most Highland counties and the **Sasines** for Caithness date from 1646-1970.
- ♦ **What can I use them for?** To trace the history of a building; to learn when a certain person or family bought a house or a piece of land; to discover the value of a building or piece of land when it was sold; to track who inherited property.
- ♦ **What will they tell me?** An entry in the **Abridgement of Sasines** will typically include details of the person selling the land/building, the purchaser and some information about the property and the sale price. They do not give information about who lived at a certain house in a certain year.



289 (No.4) Mar. 20. 1961. 11-12 935. 173.
 NOTICE OF TITLE - Of Trustees under Deed of Trust by NINA CAROLINE OGILVIE GRANT, COUNTESS OF SEAFIELD [for LADY PAULINE ANNE OGILVIE-GRANT-STUDLEY-HERBERT and others], dated 15th Jan. 1954 - to 18,000 Acres of ground [bounded by DIRDHU ROAD part of lands of FREUCHIE, OGILVIE, ROTHES and others], in Parish of Abernethy, described in Disp. to Trustees under said Deed of Trust, recorded 19th Jan. 1954, with Minerals &c., excepting parts conveyed; which subjects were last vested in said last mentioned Trustees, from whom said first mentioned Trustees acquired right by Deed of Assump. and Convey.

- ◆ **Will there definitely be useful information in there?** If you're researching the history of a building in the Highlands the **Abridgments of Sasines/Sasines** will certainly hold useful information. If you're trying to trace an ancestor relevant information is less guaranteed. Prior to the 20th Century it was very uncommon for people in Scotland to own their own houses or land and consequently a large percentage of the **Sasines** relate to a very small proportion of the population.
- ◆ **Do I need to know anything first?** Any information you can provide about the building's location and/or previous owners will speed up the process of locating it in the **Sasines** (although certain volumes are indexed by place and by person).
- ◆ **Are there any viewing restrictions?** No. The **Abridgments of Sasines/Sasines** and the **Sasine Minute Books** are all open.
- ◆ **Can I have photocopies?** Yes. The charges are listed at the desk.
- ◆ **Can I take photographs?** Yes. The charges are listed at the desk.
- ◆ **Where can I find out what you hold?** The county **Abridgments of Sasines** are listed in the black folder labelled Registers of Sasines.
- ◆ **Where do I go next?** Why not look at the Valuation Rolls? They provide information about proprietors, tenants and occupiers for every property on a regular basis between 1855-1970 .

